

LanSend

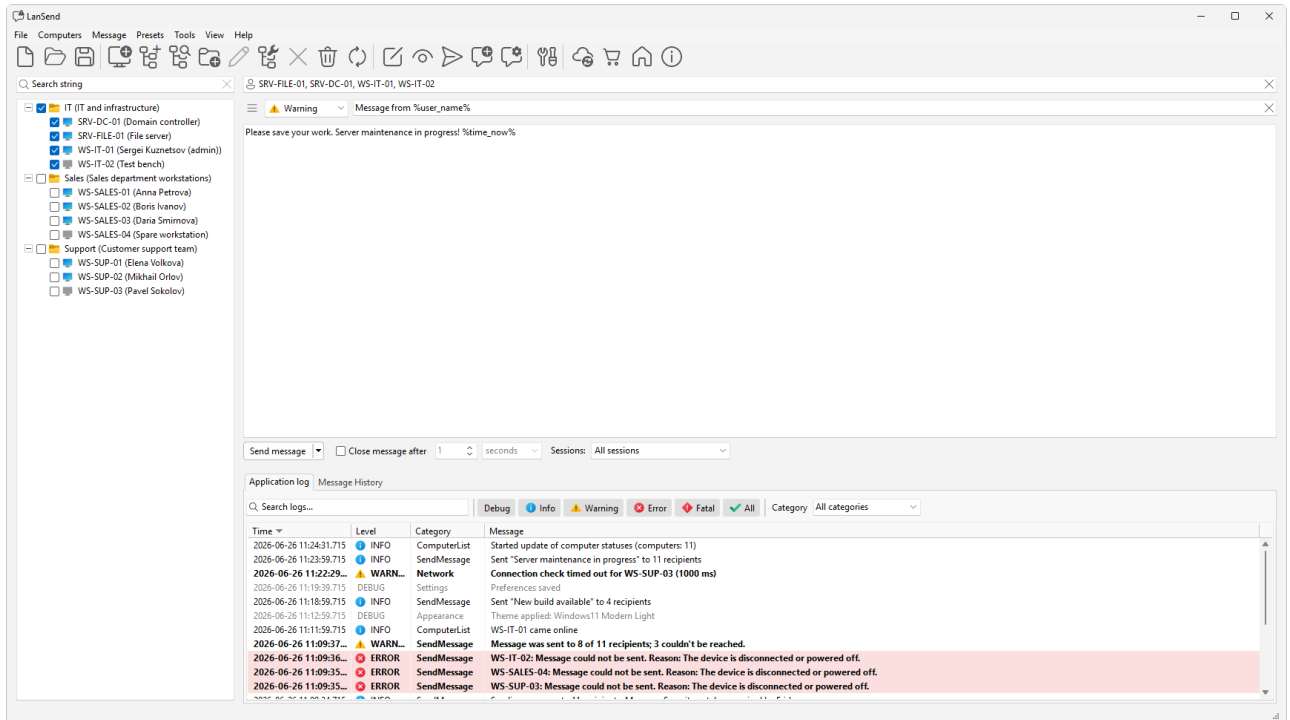
Getting started

Table of Contents

Introduction	3
What LanSend does	3
Who it is for	3
What you can do	3
See also	4
System requirements	5
Supported operating systems	5
Minimum hardware	5
What you need to send a message	5
See also	5
Installing LanSend	6
How to install	6
Nothing on the receiving computers	7
See also	7
The main window	8
The menu bar	8
The computer list	8
The composer	8
The send bar	9
The log and history tabs	9
See also	9

Introduction

LanSend is a LAN messenger for Windows. It sends a pop-up message to one computer or to many across your local network, with no server to set up and nothing installed on the computers that receive it.



What LanSend does

LanSend shows a Windows message box to the people logged on to the computers you pick. It uses the Windows Terminal Services (WTS) messaging channel that comes with Windows, so there is no agent on the receiving computers and no central server. You need network access to each target computer and administrative rights on it.

This is the modern replacement for the old `net send`, which Microsoft removed after Windows XP. For a side-by-side look at the built-in tools, see [net send and msg.exe alternative](#).

Who it is for

LanSend suits anyone who manages a group of Windows computers on one network: IT admins, helpdesk teams, computer labs, schools, and shop floors. Use it to warn a room before a server restart, tell a single user that their session is about to end, or post a maintenance notice across a lab.

What you can do

- Message one computer or broadcast to a whole group at once with the **Send message** button.
- Set the message type to **None**, **Info**, **Warning**, or **Error**, and give it a title.
- Choose which sessions receive it from the **Sessions**: dropdown: **All sessions**, **Active**, **Logged-on**, or **Console**.

- Reuse a saved preset to fill in a message you send often.
- Review what you have already sent on the **Message History** tab.

See also

- [The main window](#)
- [LanSend handbook](#)
- [Download LanSend](#)

System requirements

LanSend is a native 64-bit application that sends pop-up messages to Windows PCs across your local network. This page lists the operating systems it runs on, the minimum hardware, and what you need on the network to deliver a message.

Supported operating systems

LanSend runs on the 64-bit editions of:

- Windows 11
- Windows 10
- Windows Server 2022
- Windows Server 2019
- Windows Server 2016

The same list covers both the machine you run LanSend on and the machines you send to.

Minimum hardware

- 1 GHz CPU
- 512 MB RAM
- 50 MB free disk space

What you need to send a message

LanSend uses the built-in Windows Terminal Services (WTS) messaging channel, so nothing is installed on the recipient and there is no server to set up. To reach a target PC you need two things:

- Network reachability to that PC over the local network.
- Administrative rights on the target.

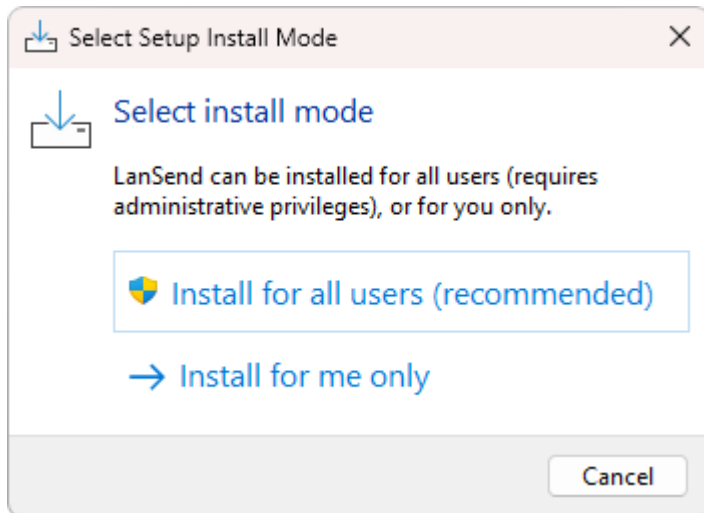
Once those are in place, you can compose a message and send it from the main window.

See also

- [Installing LanSend](#)
- [Download LanSend](#)

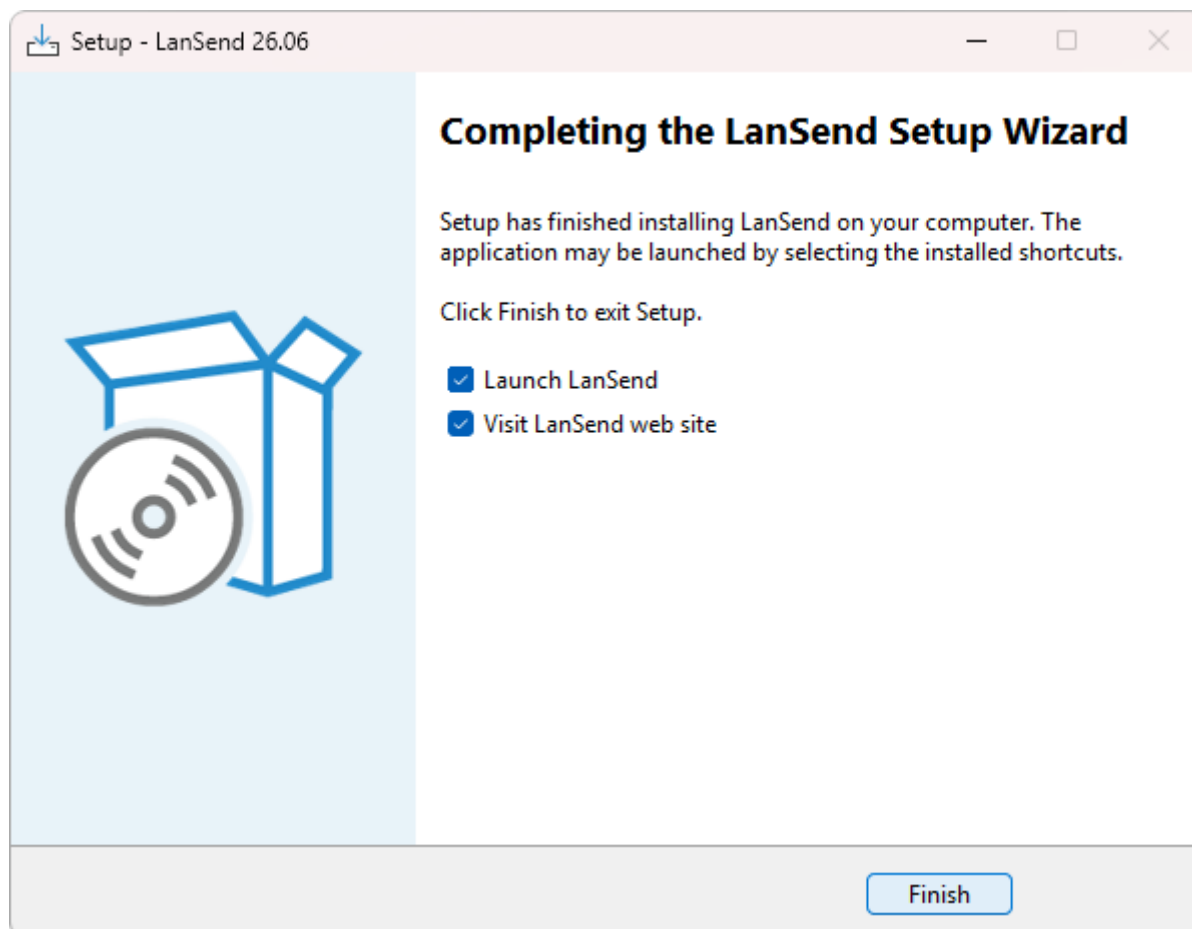
Installing LanSend

LanSend installs in a few minutes with a standard Windows setup. You install it only on the machine you send from, not on the computers that receive your messages.



How to install

1. Open the [Download LanSend](#) page and save the installer.
2. Run the downloaded file. In **Select Setup Install Mode**, choose **Install for all users (recommended)**, which needs administrative rights, or **Install for me only**.
3. Follow the prompts to confirm the install location and shortcuts. Installing for all users places LanSend under Program Files; installing for yourself keeps it in your own profile.
4. On the **Completing the LanSend Setup Wizard** page, leave **Launch LanSend** ticked to start it right away, then click **Finish**.



The setup runs on Windows 11, Windows 10, and Windows Server 2022, 2019, and 2016 (64-bit editions). For the full hardware and operating system list, see [System requirements](#).

Nothing on the receiving computers

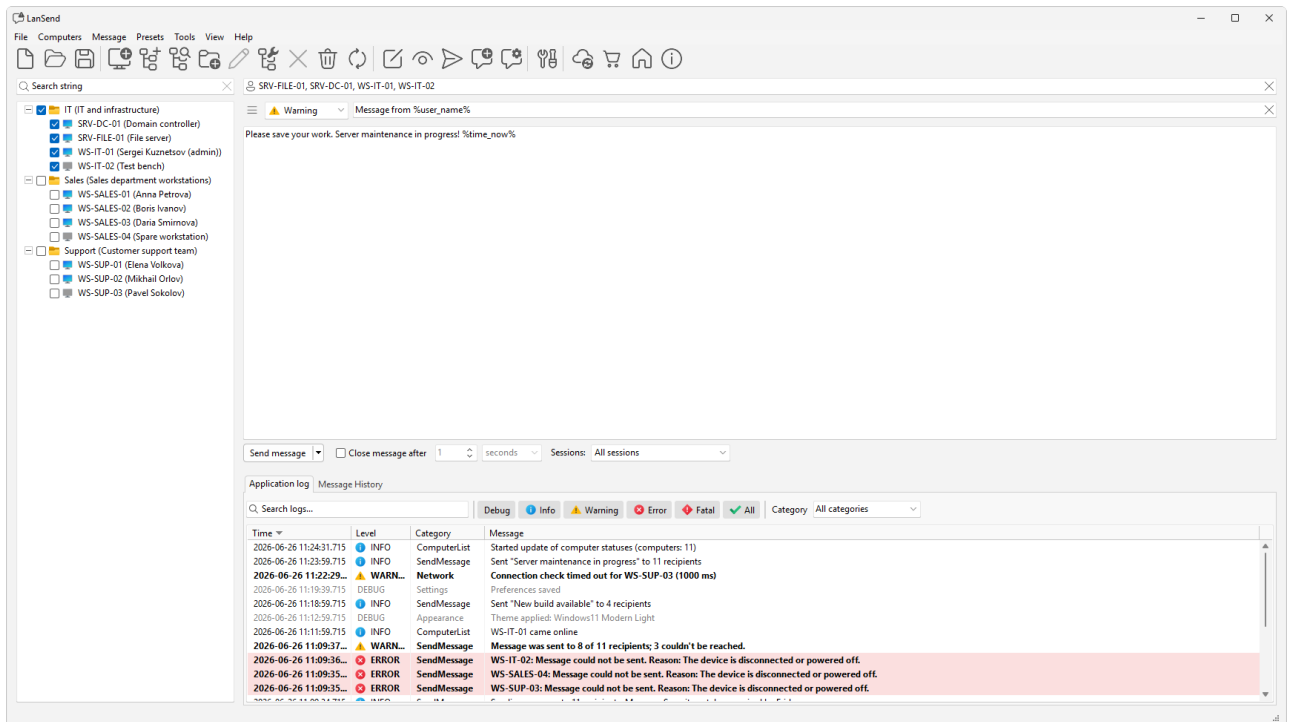
LanSend uses the messaging channel built into Windows, so the computers you message need no agent, client, or any other software from you. You install LanSend once, on your own PC, and message the rest of the network from there. Each target needs network reachability and administrative rights on it.

See also

- [The main window](#)
- [LanSend](#)

The main window

The LanSend main window keeps everything in one place: your computers on the left, the message you are writing on the right, and the send controls along the bottom. This tour walks through each area.



The menu bar

The menu bar runs across the top with seven menus: **File**, **Computers**, **Message**, **Presets**, **Tools**, **View**, and **Help**. Between them they reach every feature, grouped by the job you are doing.

The computer list

The left panel is your computer list, shown as a tree of groups and machines. A live search box sits at the top; type part of a name or description and the list filters as you type. For how to add and organize machines, see [Building your computer list](#).

The composer

The upper-right area is where you write a message. At the top, the recipients box (marked with a person icon) is read-only and shows the names of the computers you checked. A message type combo sets the icon and sound (**None**, **Info**, **Warning**, or **Error**), with a title field beside it and a body memo below. The presets button (the menu icon at the far left of that row, just before the message type combo) fills the title, body, and type from a saved message.

The send bar

The send bar sits between the message body and the log and history tabs. The **Send message** split button sends to the checked computers. A **Close message after** checkbox, with a value and a unit, makes the pop-up close on its own; leave it unticked and the message stays until the user clicks **OK**. A **Sessions:** dropdown picks which sessions on each machine receive the message.

The log and history tabs

The lower-right area has two tabs. **Application log** records what the app did, with columns for **Time**, **Level**, **Category**, and **Message**. **Message History** keeps the messages you have sent, with columns for **Time**, **Type**, **Recipients**, **Title**, and **Message**. Each tab has its own filters.

See also

- [Sending messages](#)
- [Message history](#)
- [LanSend](#)