

Remote Process Explorer

Getting Started

Table of Contents

Introduction	5
Installing Remote Process Explorer	5
Before starting the application	5
Starting the application	6
Main window	7
Main menu	7
<i>File Menu</i>	7
<i>Edit menu</i>	8
<i>Computers menu</i>	8
<i>Process menu</i>	9
<i>View menu</i>	10
<i>Help menu</i>	10
Toolbar	11
Computer list	11
Process List	12
<i>Columns</i>	13
<i>Process Filter</i>	15
Graphs	15
CPU Usage	15
Memory Usage	16
Handles	16
Threads	17
I/O Read Bytes/s	17
I/O Write Bytes/s	17
Status bar	17
Dialog Boxes	18
Add Computer	18
Add Computers Wizard	18
Import computers from network	19
Import computers from Active Directory	20
Import computers from IP Range	20
Import computers from file	21
Search for computers	22

Select grouping type for computers	22
Add computers to list	23
Create New Group	24
Connect As	24
Change Process Priority	25
Kill Process	25
Process Properties	25
Run	27
Shut down	27
Find in List	28
Column Settings	28
Preferences	29
General	29
Computer list	30
Process list	31

Introduction

Remote Process Explorer controls processes on the local or remote computer. **Remote Process Explorer** makes it easier to solve everyday problems of a network system administrator or a home user who has several computers. **Remote Process Explorer** offers you not only tools for controlling processes, but also standard administrative tools. You can also control the power on the remote computer, restart it or switch it off.

Installing Remote Process Explorer

- You can install **Remote Process Explorer** after downloading it from the [Download](#) page.
- Click the **Save** button to save the installation file. You will see the window showing the progress of downloading the installation file to your computer.
- Run the installation file after it is downloaded.
- Follow the Installation Wizard instructions after you run the installation file. After the installation is over, you can start working with the application.³

Before starting the application

Software doesn't work with Windows Home editions because remote administrating is disabled in these versions. Software works with XP Pro, Vista Business, Windows Server 2008 R2, Windows 8, 8.1, 10, Windows Server 2012, 2012R2, 2016.

You must have administrative privileges to connect to the remote computer.

If your current account is not administrative then you may specify administrative login and password in properties of the remote computer in computer list (right click on the remote computer→ Properties→Connect as)

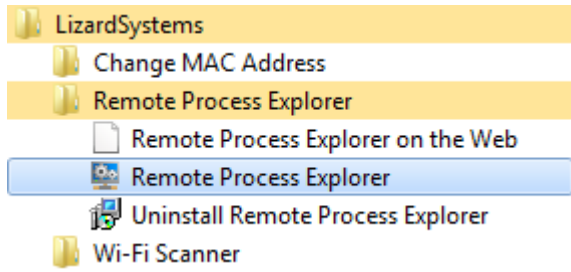
1. Make sure the administrator account has a password. Blank password will NOT work. Go to Control Panel → User Accounts → Create a password for the admin user.
2. Make sure simple file sharing is disabled. - Go to Control Panel → Folder Options → View tab → Scroll right to the bottom at Advanced Settings → Uncheck Use simple file sharing.
3. Make sure file and printer sharing exception is allowed in the firewall or simply turn off the Windows Firewall. - Go to Start → Run → type netsh firewall set service type = FILEANDPRINT mode = ENABLE and click OK.
4. Start → Settings → Control Panel → Administrative Tools → Local Security Policy → Network access: Sharing and security model for local accounts option → Set Classic: Local users authenticate as themselves.

As a rule these parameters are set by default in corporate network because it is impossible to provide remote administrating without these settings.

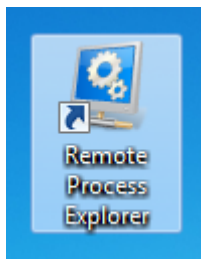
Home user must set these parameters by himself.

Starting the application

You can start **Remote Process Explorer** either from the **Start menu**



or by clicking its **desktop** shortcut.



After you start the application, you will see the **main window** of the program.

Main window

The main window of the program consists of 3 areas.

Upper area – The **main menu** and **toolbar** where you can access commands controlling the program.

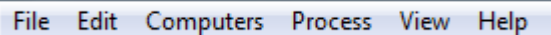
Central area – split vertically into two parts – The **list of computers** and the **list of processes** where you can see how the program is running.

Lower area – the **status bar** that shows brief information about how the program is running.

When you start the program, you can see the processes running on the local computer. To connect to a remote computer, just double-click it in the list to the left and you will automatically connect to it and see all processes running on it. After you connect to the remote computer, you will be able to kill any process, change its priority or run a new one.

Main menu

You can access any commands available in the application from the main menu of the program.



File Edit Computers Process View Help

The main menu contains the following menus:

File – Operations with files containing computer lists and also the program preferences.

Edit – Editing the computer list.

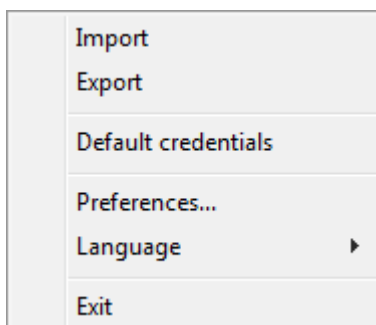
Computers – Controlling the computer list.

Process – Controlling the process list.

View – Controlling how information about processes is displayed in the program.

Help – Help, support and information about the program.

File Menu



Import – Import the computer list from a file. It is possible to import it from a text or XML file previously exported from the program. This command will be useful if you decide to merge several computer lists into one.

Export – Export the computer list to a file. You can export it in two formats: TXT and XML.

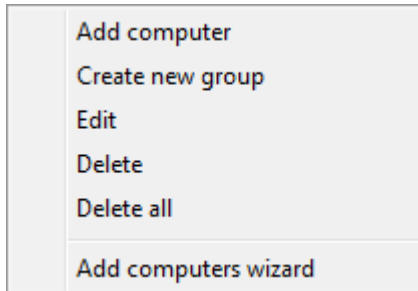
Default credentials - edit default credentials

Preferences – Configure the program.

Language – Select the language of the program interface. English is the default language. You can translate the interface into your native language yourself.

Exit – Exit the program.

Edit menu



Add computer – Add a computer to the computer list. If you select this item, you will see either the “**Add Computer**” dialog box.

Create new group – Create a new group in the computer list. Computer groups help you arrange computers in the list. You can add computers from different departments in your company to different groups, which will make searching for them easier in the future.

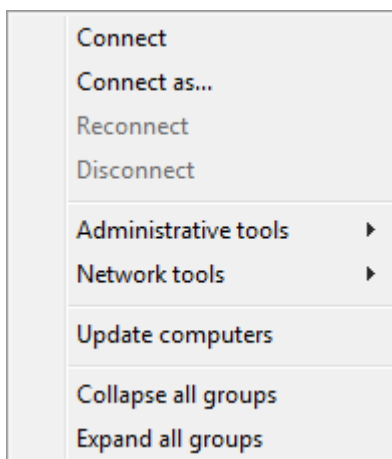
Edit - edit the selected computer or group

Delete – Delete the selected computer.

Delete all – Delete all computers and groups from the computer list.

Add computers wizard – Start the wizard that will create a computer list.

Computers menu



Connect – Connect to the remote computer selected in the computer list.

Connect as – Connect to the remote computer selected in the computer list with specified credentials.

ReConnect – reconnect to the remote computer.

Disconnect – Disconnect from the remote computer. After you execute this command, you will see processes running on the local computer in the process list.

Administrative Tools - administrative tools for managing remote computer

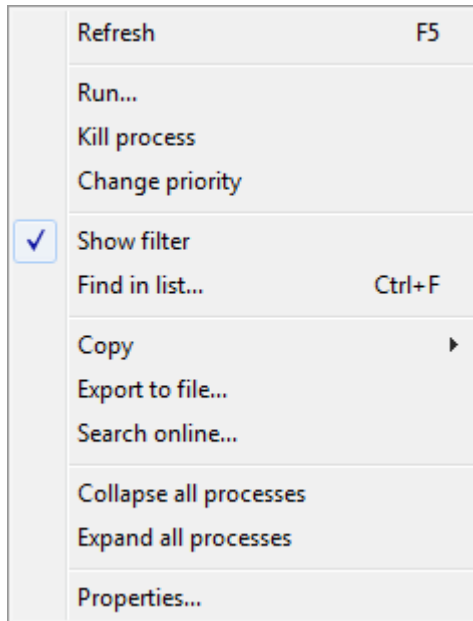
Network Tools - network tools for monitoring remote computer

Update computers – Update the state of computers in the computer list. The method selected in the preferences (ping, a connection to the specified port) is used to check the state.

Collapse all groups – Collapse all groups in the computer list.

Expand all groups – Expand all groups in the computer list.

Process menu



Refresh – Update the list of processes on the local or remote computer.

Run... – Run a process on the remote computer. If you select this item, you will see the **”Run“** dialog box where you can specify the path to the application and the account that will be used to run it.

Kill process – End the selected process on the local or remote computer.

Change priority – Change the priority of the selected process. If you select this item, you will see the **”Change Process Priority“** dialog box.

Show filter – show/hide process filter.

Find in list – search the process list for the specified text.

Copy – Copy information about the selected process to the clipboard.

Export to file... – export process list to file.

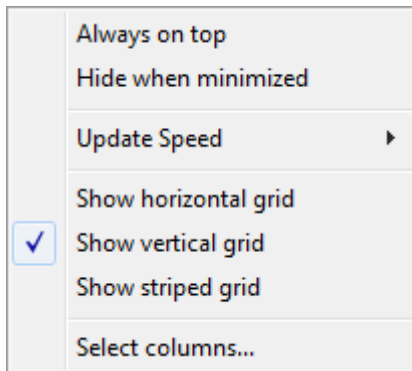
Search online... – Search the Internet for information about the selected process.

Collapse all processes – collapse all nodes in process list.

Expand all processes – expan all nodes in process list.

Properties... – Show the process properties. If you select this item, you will see the **”[Process Properties](#)“** dialog box where you can see all properties of this process.

View menu



Always on top – If the checkbox is selected, the application window will always be on top of other windows.

Hide when minimized – If the checkbox is selected, the application taskbar button will be hidden when the application is minimized.

Update Speed – Specify how often to update the process list. Four options are available: High, Normal, Low and Paused - you can specify their values in the **“Preferences”** dialog box. If you select **“Paused”**, you will have to update the list manually using the **“Refresh”** command.

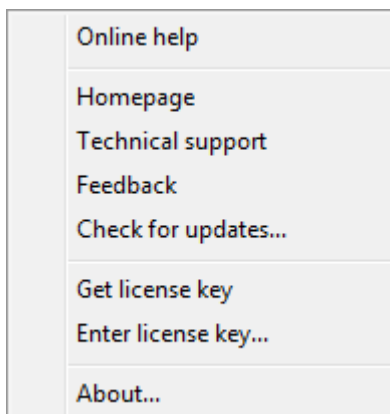
Show horizontal grid – If the checkbox is selected, the horizontal grid is displayed in the process list.

Show vertical grid – If the checkbox is selected, the vertical grid is displayed in the process list.

Show striped grid – If the checkbox is selected, the striped grid is displayed in the process list.

Select columns - show **“Column Settings”** dialog box to specify what columns and in what order should be shown.

Help menu



Online help – Open the help page on the program site.

Homepage – Open the application homepage.

Technical support – Open the page where you can request technical support.

Feedback – Open the page where you can send feedback to the developers.

Check for updates... – Check for any updates available for the application.

Get license key – Open the page where you can get registration codes for the application.

Enter license key... - Enter your registration information.

About... – Show brief information about the program.

Toolbar

The toolbar contains buttons for quick access to frequently used commands.



- **Add computers wizard** – Start the wizard that will create a computer list.
- **Create new group** – Create a new group in the computer list. Computer groups help you arrange computers in the list. You can add computers from different departments in your company to different groups, which will make searching for them easier in the future.
- **Add computer** – Add a computer to the computer list. If you select this item, you will see either the “**Add Computer**“ dialog box.
- **Edit** – edit selected computer or group from the computer list.
- **Delete** – Delete the selected computer or group.
- **Connect** – Connect to the remote computer selected in the computer list.
- **Connect as** – Connect to the remote computer selected in the computer list with specified credentials.
- **Reconnect** – reconnect to the remote computer.
- **Disconnect** – Disconnect from the remote computer. After you execute this command, you will see processes running on the local computer in the process list.
- **Refresh** – Update the list of processes on the local or remote computer.
- **Run...** – Run a process on the remote computer. If you select this item, you will see the “**Run**“ dialog box where you can specify the path to the application and the account that will be used to run it.
- **Kill process** – Kill the selected process on the local or remote computer.
- **Change priority** – Change the priority of the selected process. If you select this item, you will see the “**Change Process Priority**“ dialog box.
- **Process Properties...** – Show the process properties. If you select this item, you will see the “**Process Properties**“ dialog box where you can see all properties of this process.
- **Search online...** – Search the Internet for information about the selected process.
- **Find in list** – Search the process list for the specified text.
- **Show Process Filter** – show filter for process list.
- **Default credentials** -show dialog “Default credentials”.
- **Preferences** – Configure the program.
- **Online help** – Open the help page on the program site.
- **About** - show dialog “About Remote Process Explorer”.

Computer list

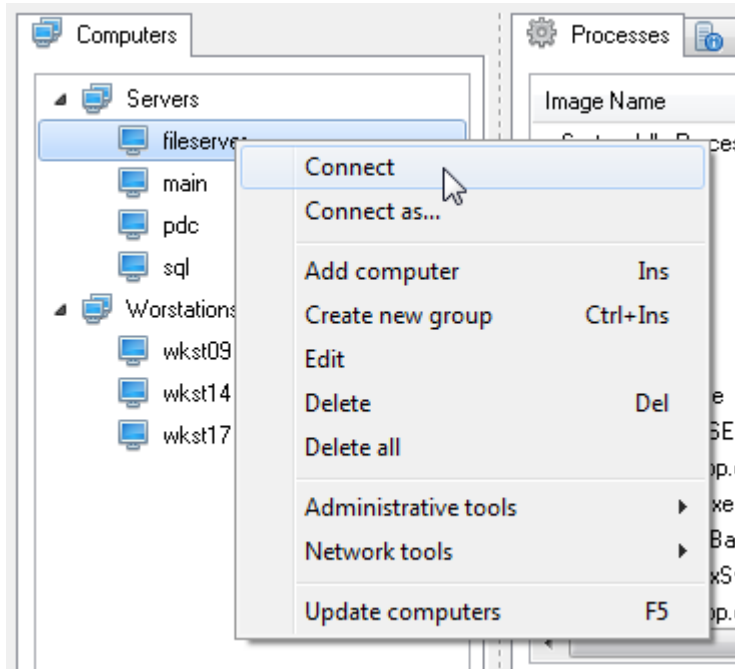
The computer list occupies the left part of the application window.

The **Computer List** panel shows the list of computers in the form of a tree where you can see computers and computer groups. Computer groups are used to group computers not only by their domain names, but also logically. You can create any number of groups and computers. It is possible to change the properties

of whole computer groups. The drag-n-drop technology is supported.

Computer List Popup menu

<http://127.0.0.1:8000/assets/ckeditor/ckeditor/plugins/insertpre/plugin.js?t=H8DA>



Connect – Connect to the remote computer selected in the computer list.

Connect as – Connect to the remote computer selected in the computer list with specified credentials.

Reconnect – reconnect to the remote computer.

Disconnect – Disconnect from the remote computer. After you execute this command, you will see processes running on the local computer in the process list.

Add computer – Add a computer to the computer list. If you select this item, you will see either the “**Add Computer**” dialog box.

Create new group – Create a new group in the computer list. Computer groups help you arrange computers in the list. You can add computers from different departments in your company to different groups, which will make searching for them easier in the future.

Edit – edit the selected computer or group.

Delete – Delete the selected computer.

Delete – Delete all computers from the list.

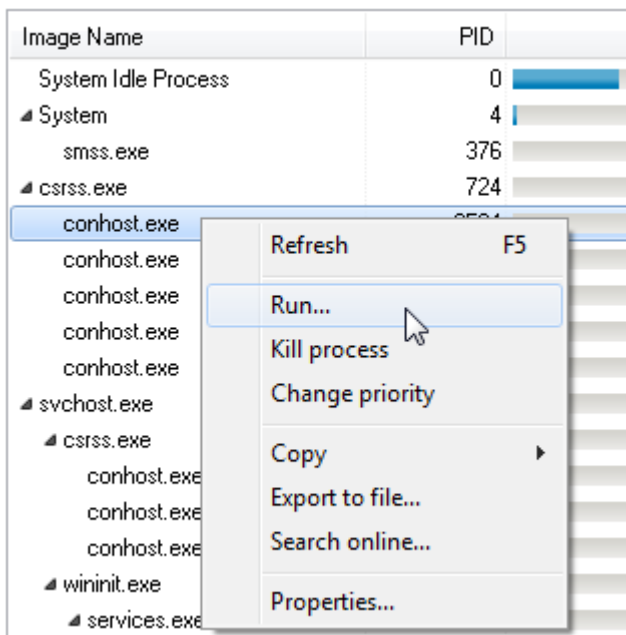
Administrative tools - administrative tools to manage a remote computer

Network tools - network tools to monitor a remote computer

Update computers – Update the state of computers in the computer list. The method selected in the preferences (ping, a connection to the specified port) is used to check the state.

Process List

The process list shows processes running on the local or remote computer and their properties. A right click on a process opens a popup menu with commands controlling processes.



The menu contains the following items:

Refresh – Update the list of processes on the local or remote computer.

Run... – Run a process on the remote computer. If you select this item, you will see the “**Run**“ dialog box where you can specify the path to the application and the account that will be used to run it.

Kill process – End the selected process on the local or remote computer.

Change priority – Change the priority of the selected process. If you select this item, you will see the “**Change Process Priority**“ dialog box.

Copy – Copy information about the selected process to the clipboard.

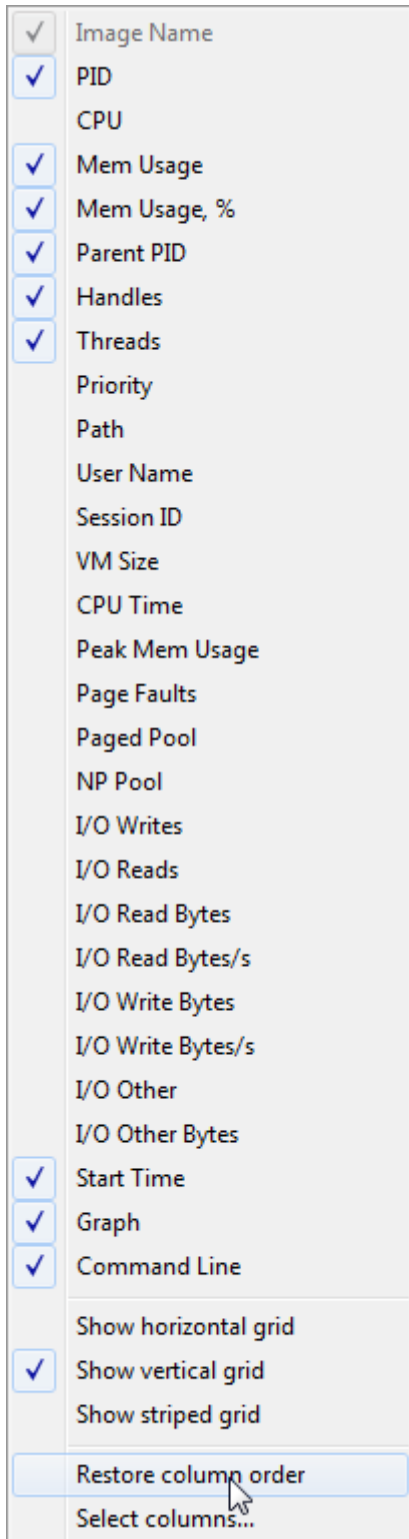
Export file – export the process list to file.

Search online... – Search the Internet for information about the selected process.

Properties... – Show the process properties. If you select this item, you will see the “**Process Properties**“ dialog box where you can see all properties of this process.

Columns

To show additional columns, right-click the list header and select the checkboxes of the corresponding columns in the popup menu.



To completely configure the columns, select the **“Select Columns”** command and use the **“Column Settings”** dialog box to specify what columns and in what order should be shown.

To sort processes by any column, click the column header. To show the process list in the form of a tree, click the **“Image Name”** column.

Process Filter

Processes System Information

Filter by Process Name contains python

- Process Name
- CPU Usage
- Memory Usage
- Memory Usage, %
- PID
- Parent PID
- Threads
- Handles

Image Name	PID	CPU	Mem Usage	Mem Usa...
pytl	10224		14 844 K	0,18%
pytl	4780		34 952 K	0,43%
pytl	780	11,15%	133 996 K	1,66%

Processes System Information

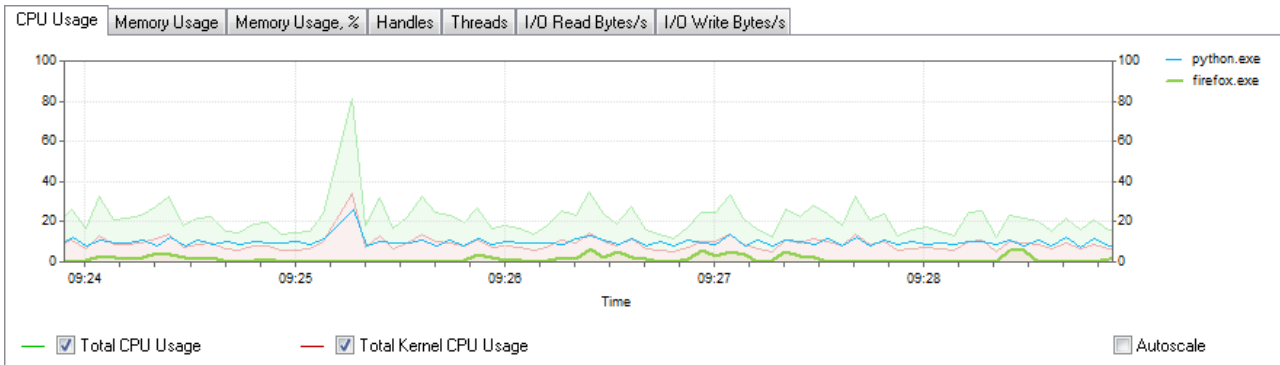
Filter by Process Name contains python

- contains
- excludes
- begins with
- ends with

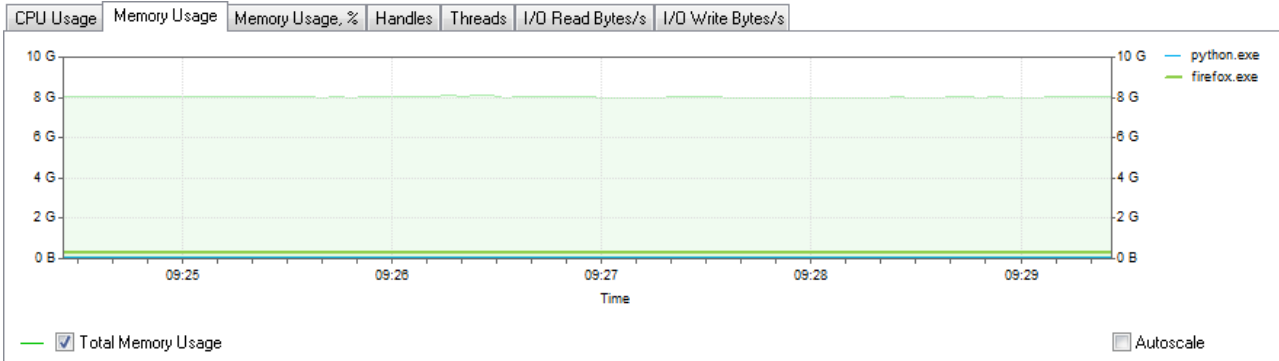
Image Name	PID	CPU	Mem Usage	Mem Usa...
python.exe			14 844 K	0,18%
python.exe	4780		34 992 K	0,43%
python.exe	780	8,11%	134 812 K	1,67%

Graphs

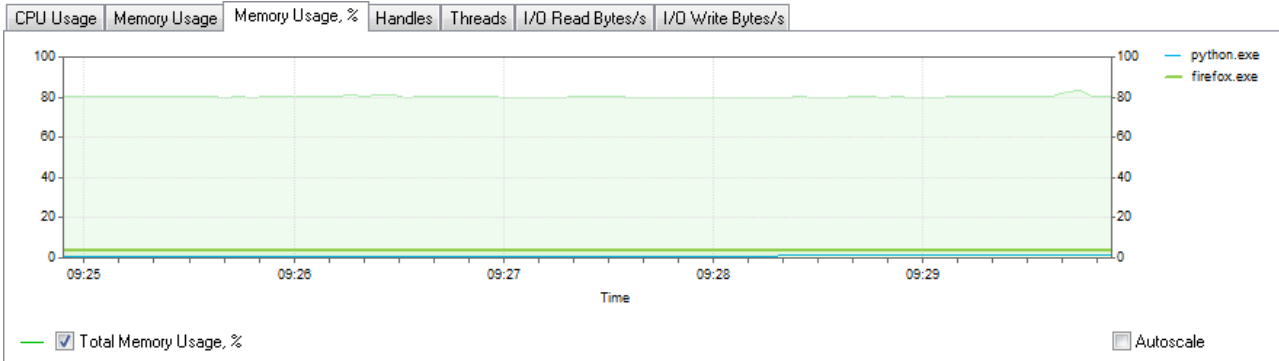
CPU Usage



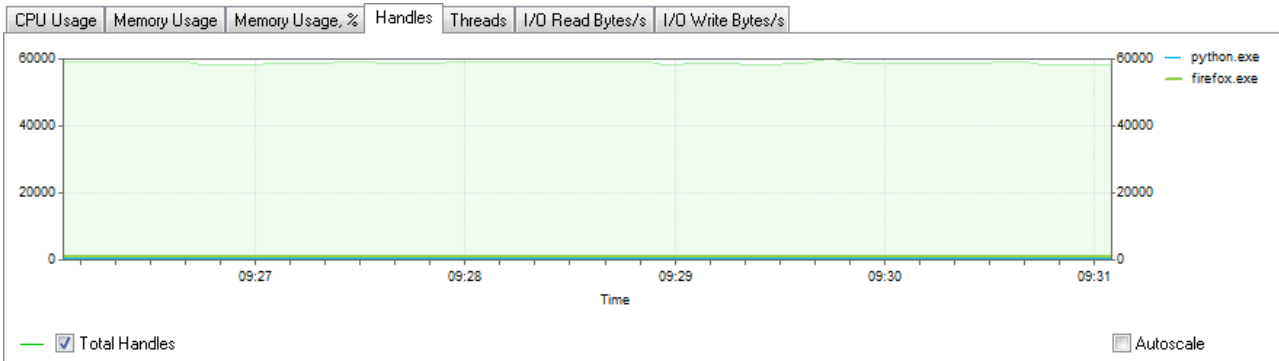
Memory Usage



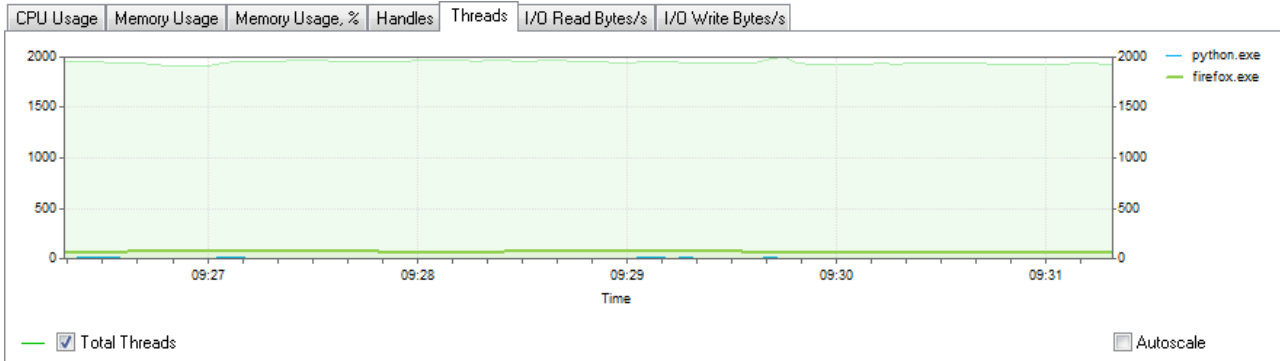
Memory Usage, %



Handles



Threads



I/O Read Bytes/s

I/O Write Bytes/s

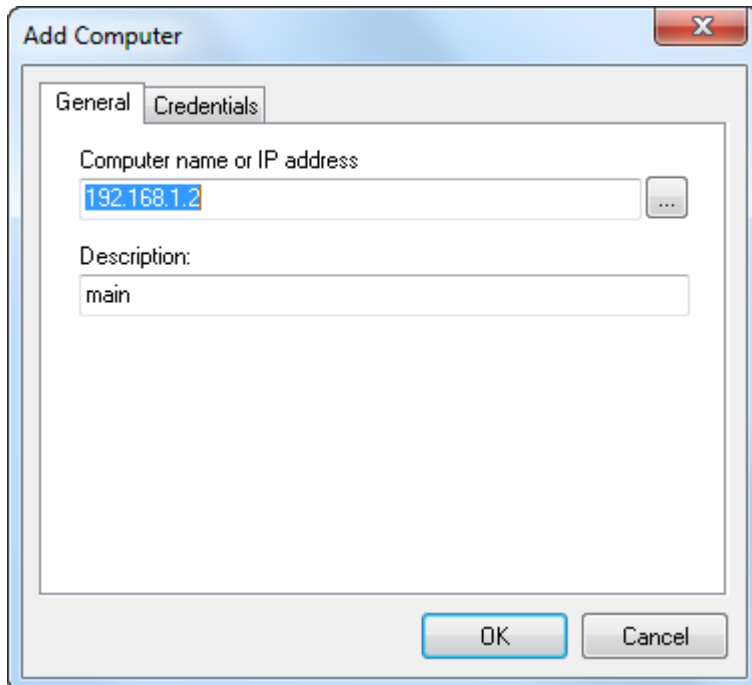
Status bar

This Computer	Processes: 166	Cpu Usage: 24,10%	Commit Charge: 6 338 M / 7 888 M	Handles: 51 107	Threads: 1 957
---------------	----------------	-------------------	----------------------------------	-----------------	----------------

- Computer name.
- Number of processes.
- CPU usage.
- Commit charge.
- Number of handles used in the system.
- Number of threads running in the system.

Dialog Boxes

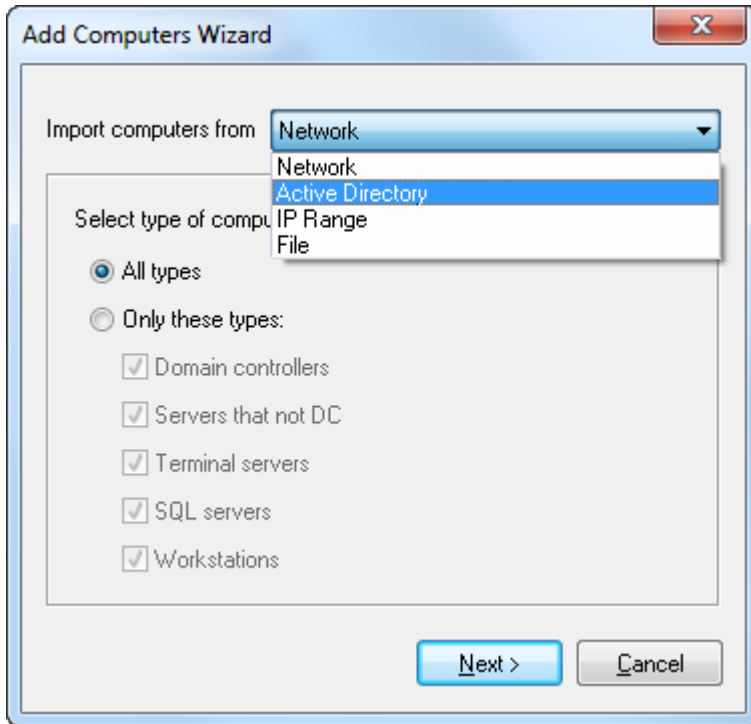
Add Computer



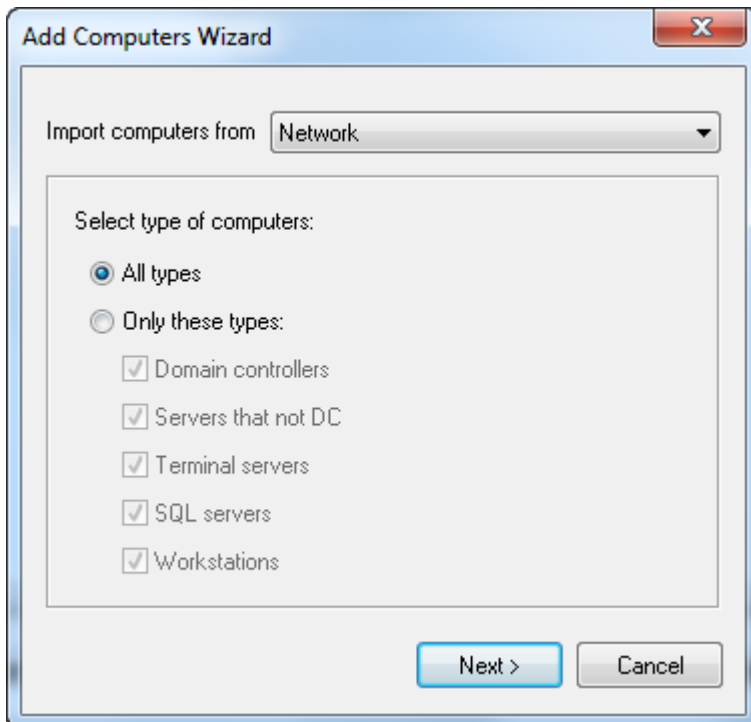
You can use the “**Add Computer**” dialog box to specify the name or IP address of the computer that you want to add to the computer list.

Add Computers Wizard

The Add Computers Wizard will help you add computers to the list. It will scan the network neighborhood and show found computers depending on the specified parameters.



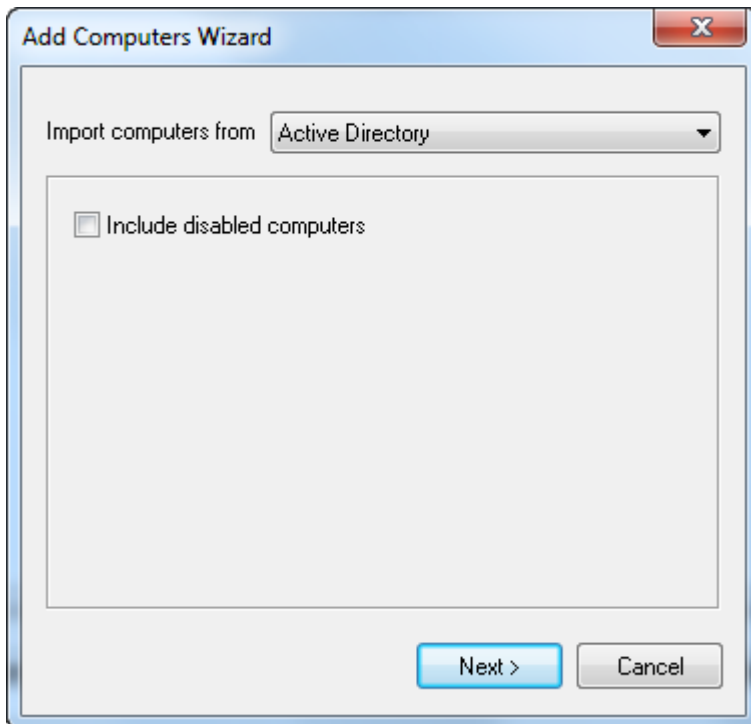
Import computers from network



You can select the types of computers that will be added to the computer list on this page. For example: to add only workstations to the list, leave only the “**Workstation**” checkbox selected or you can select the “**Servers that not DC**” checkbox if you need only servers.

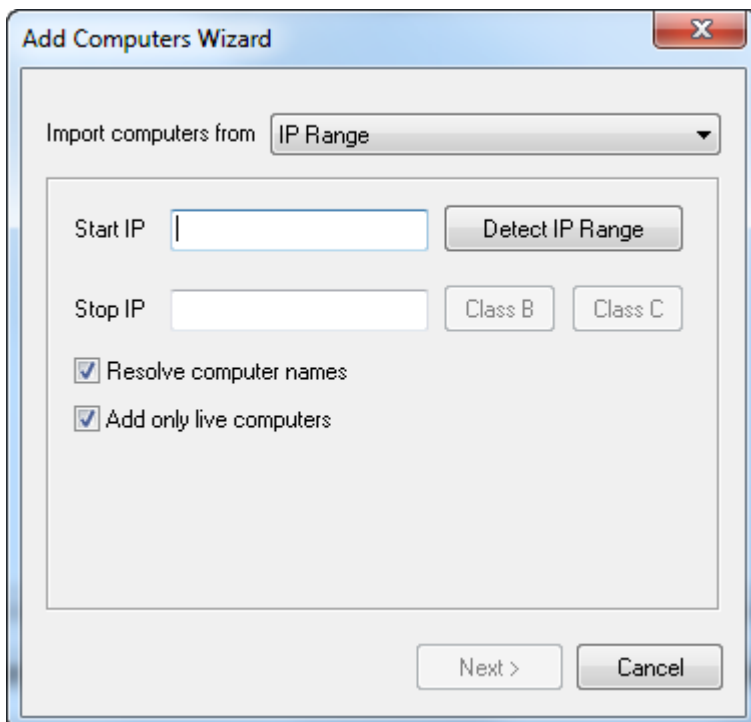
Click the “**Next >**” button after the necessary options are specified.

Import computers from Active Directory



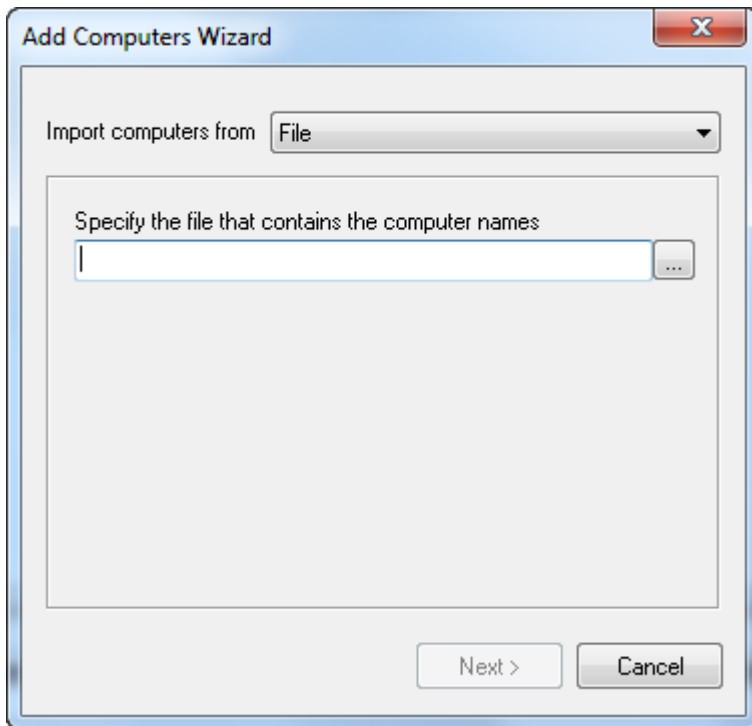
Click the “**Next >**” button after the necessary options are specified.

Import computers from IP Range



Click the “**Next >**” button after the necessary options are specified.

Import computers from file

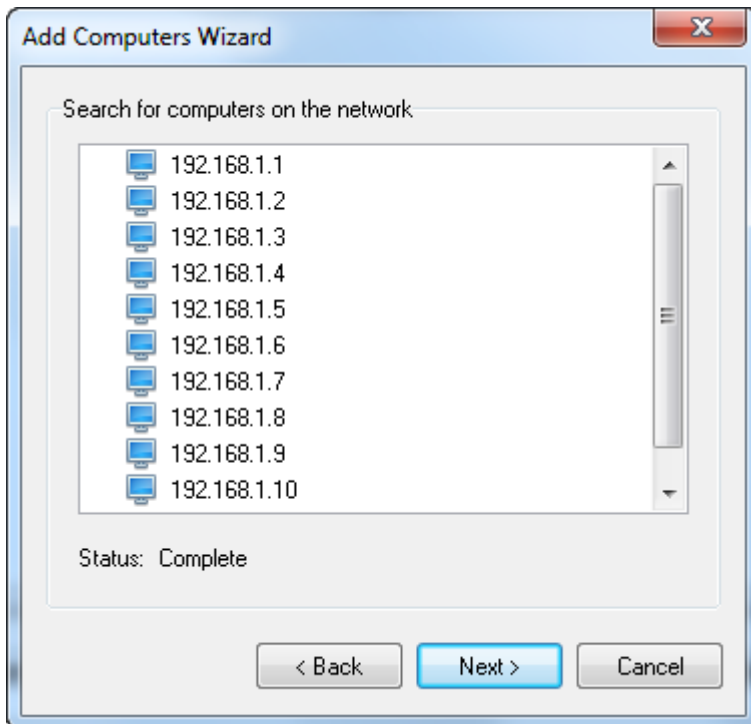


Text file must be plain text file with one ip address or computer name per line.

```
192.168.1.1
192.168.1.2
192.168.1.3
192.168.1.4
192.168.1.5
192.168.1.6
192.168.1.7
192.168.1.8
192.168.1.9
192.168.1.10
192.168.1.11
```

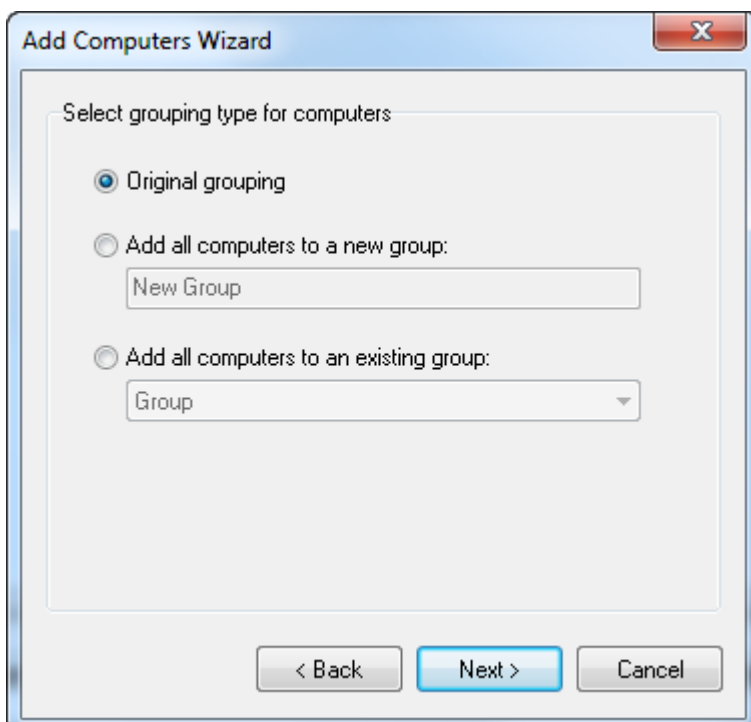
Click the **“Next >”** button after the necessary options are specified.

Search for computers



When you switch to this page, the wizard will start scanning the network neighborhood for computers. You will see the list of found computers after the scanning process is over. To change the search parameters, click the "**< Back**" button. If the results are okay, move to the next page by clicking the "**Next >**" button.

Select grouping type for computers



You can specify how to add the found computers to the list on this page.

Leave original grouping

If you select the “**Leave original grouping**” option, you will add the computers the way they were shown on the previous page and computer groups will correspond to the domains and workgroups detected in the network neighborhood.

Add computers to a new group

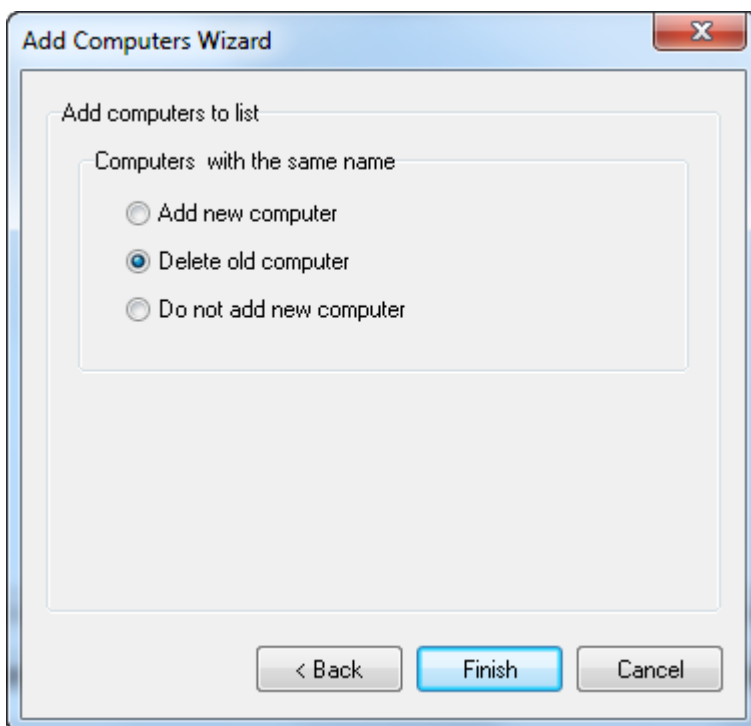
If you want the computers to be in one group for some reason, you should select “**Add computers to a new group**”. After you select this option, you can specify the name of a new group.

Add computers to an existing group

After you select this option, you can specify an existing group to add the computers

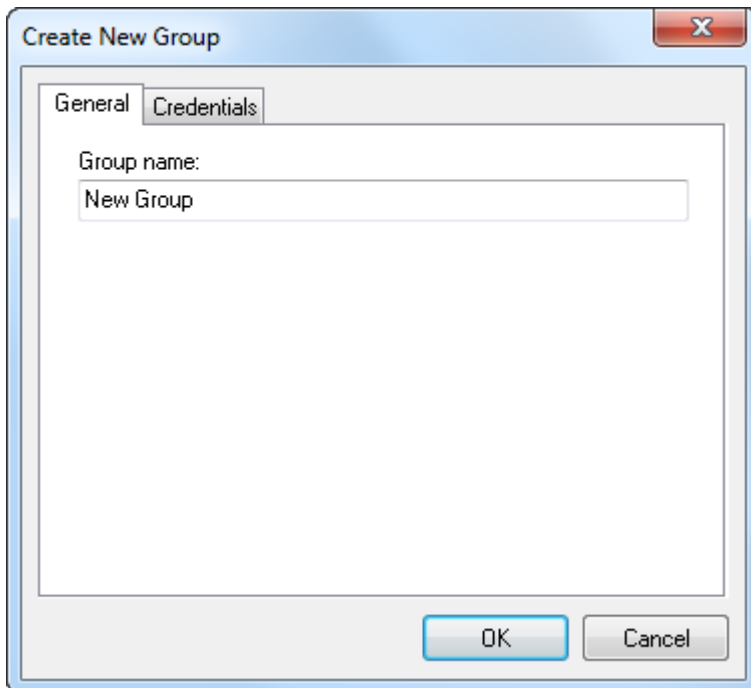
After you will be able to move on by clicking the “**Next**” button.

Add computers to list



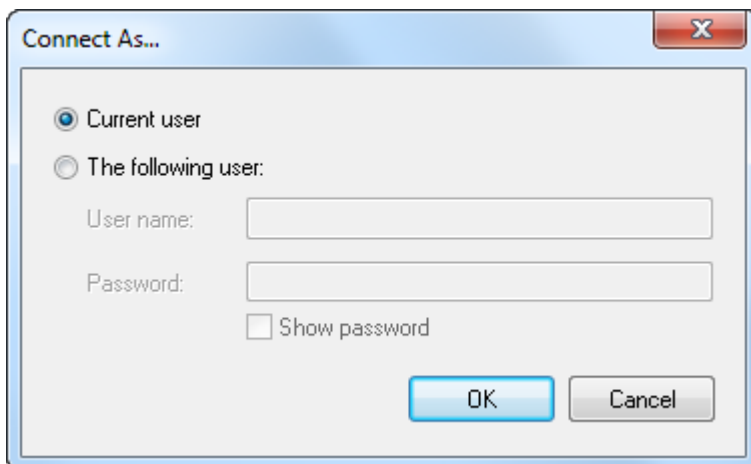
After you click the **Finish** button, all found computers will be added to the computer list in the main window.

Create New Group



You can specify the name of the new group in the computer list in the **“Create New Group”** dialog box. After you create the group, you can move computers to it or add new ones to it.

Connect As



You can use this dialog box to specify the account that will be used to connect to the remote computer.

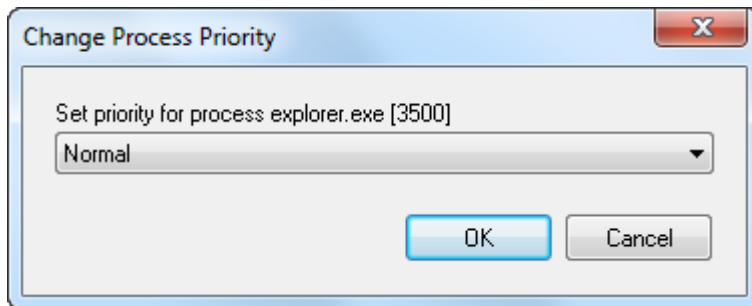
Current user

The program will connect as the current user.

The following user

You can use any other user if you specify the username and password.

Change Process Priority



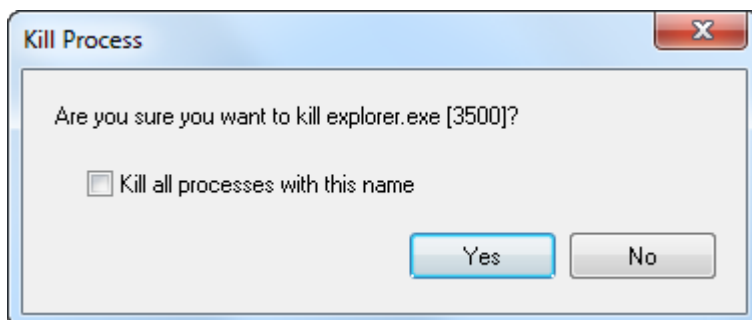
You can use this dialog box to execute the command that will change the **priority of the process**. The name of the process and its identifier are specified above the drop-down list.

The following values are possible for the priority of a process:

- Low
- BelowNormal
- Normal
- AboveNormal
- High
- Realtime

It is strongly recommended not to use the **Realtime** priority because it may decrease the stability of the operating system. The priority of the process will be changed after you click the **OK** button.

Kill Process



You can use this dialog box to execute a command that will end a process on the remote computer. If you want to end not only the selected process, but all processes with this name, select the **“Kill all processes with this name”** checkbox.

Process Properties

You can use this dialog box to view all process properties.

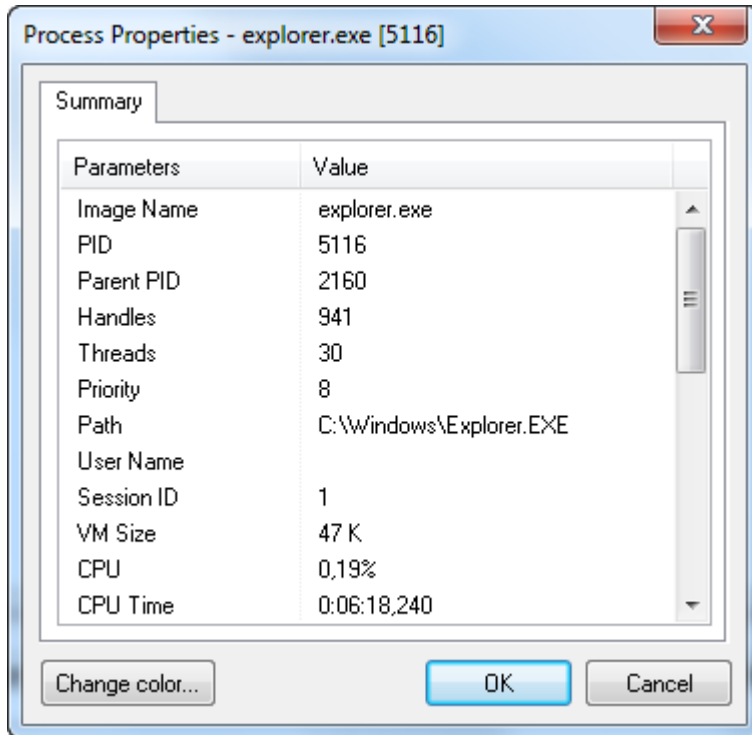


Image Name - process name

PID - Global process identifier that is used to identify a process. The value is valid from the time a process is created until it is terminated.

Parent PID - Unique identifier of the process that creates a process. Process identifier numbers are reused, so they only identify a process for the lifetime of that process.

Handles - Total number of handles that the process has open. This number is the sum of the handles currently opened by each thread in the process.

Threads - Number of active threads in a process. An instruction is the basic unit of execution in a processor, and a thread is the object that executes an instruction. Each running process has at least one thread.

Priority - Scheduling priority of a process within an operating system. The higher the value, the higher priority a process receives. Priority values can range from 0 (zero), which is the lowest priority to 31, which is highest priority.

Path - Command line used to start a specific process, if applicable.

User Name - the user name of the owner of this process.

Session ID - Unique identifier that an operating system generates when a session is created. A session spans a period of time from logon until logoff from a specific system.

VM Size

CPU -

CPU Time

Mem Usage

Peak Mem Usage

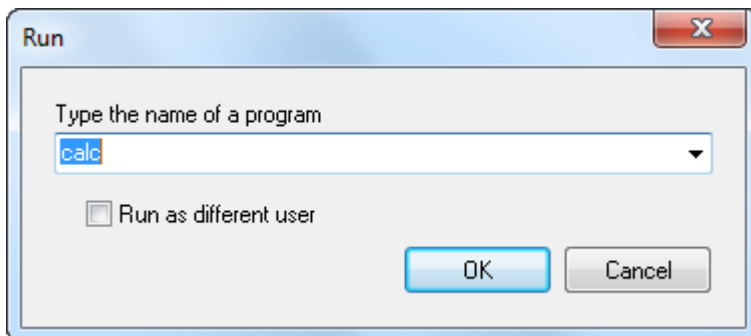
Page Faults

Paged Pool

NP Pool

I/O Writes
I/O Reads
I/O Read Bytes
I/O Write Bytes
I/O Other
I/O Other Bytes
Start Time -

Run

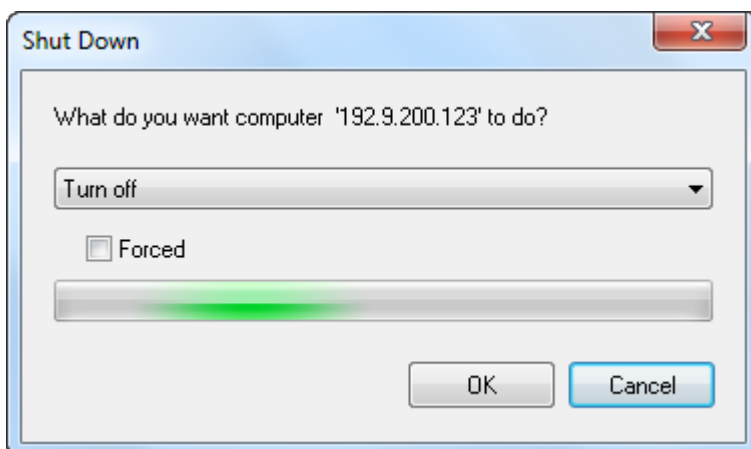


You can use this dialog box to execute a command that will run a process on the remote computer. You can run a process as the current user or as any other user. To do it, select the “Run as different user” checkbox.

If you select the “Run as different user” checkbox, you will see the “Connect As” dialog box after you click the **OK** button.

In this dialog box you will have to specify the username and password of the account you would like to use to run the process on the remote computer.

Shut down



You can use this dialog box to execute a power management command on the remote computer, switch it off or restart it.

Available commands:

Turn off - completely turn off the computer

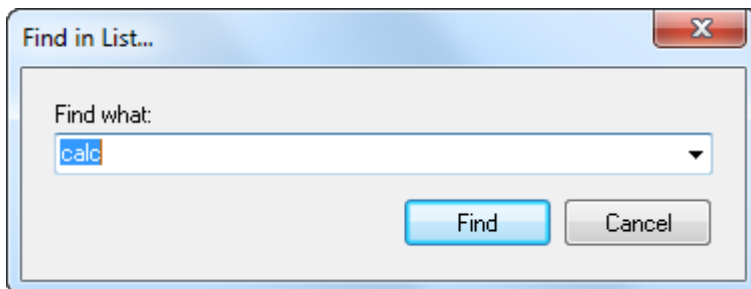
Restart – restart the computer

Log off – close the current Windows user's session

If you need to perform this operation immediately without waiting till all programs are correctly exited, select the **Forced** checkbox.

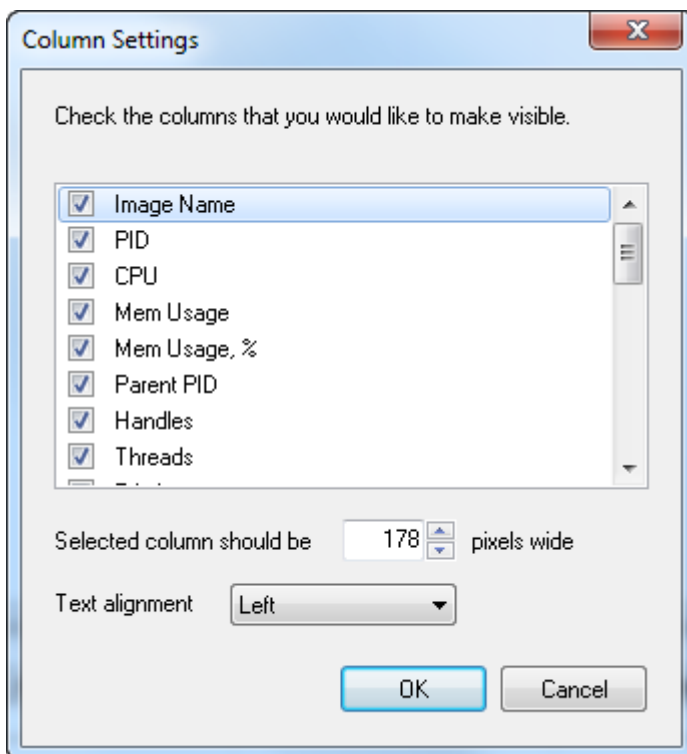
Find in List

You can use this dialog box to search the result list.



Type what you are looking for in the Find what field and click the Find button. After the software finds a matching text, the line with this text will be selected. Each time you click the **Find** button again after that, the software will search the list for the text further.

Column Settings



You can use this dialog box to configure columns in the process list: their order, width and text alignment.

The list contains all columns that can be shown in the process list. If you select or clear a checkbox, you will show or hide the corresponding column.

You can specify the column size and text alignment in the fields below the list.

Selected column should be

You can specify the width of the column in pixels.

Text alignment

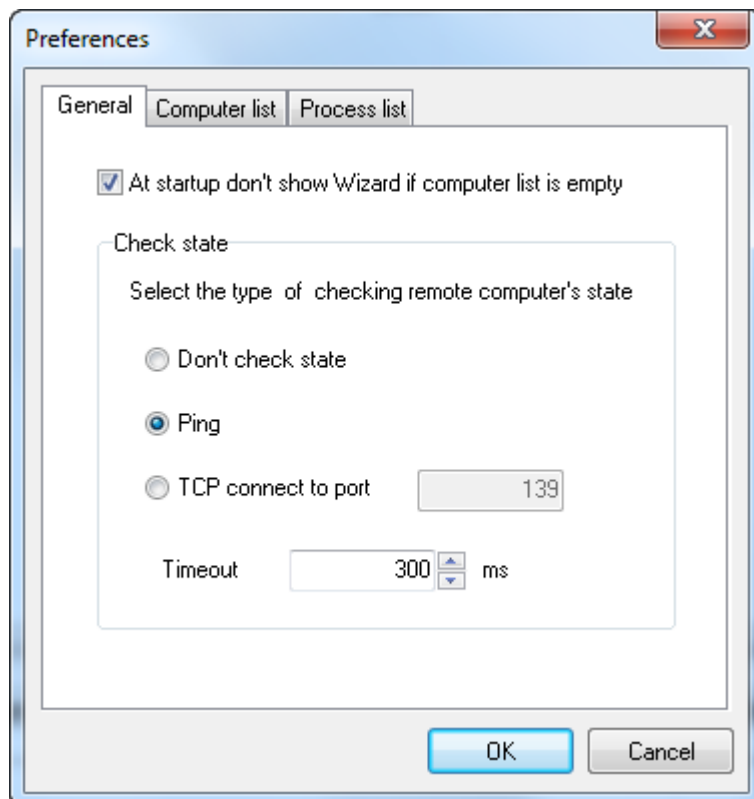
To change text alignment in the column, select the corresponding value from the drop-down list. Column text alignment options: left, right, center.

The specified column settings will be applied after you click the **OK** button.

Preferences

You can use this dialog box to configure the program. The preferences are divided into 3 groups located on tabs.

General

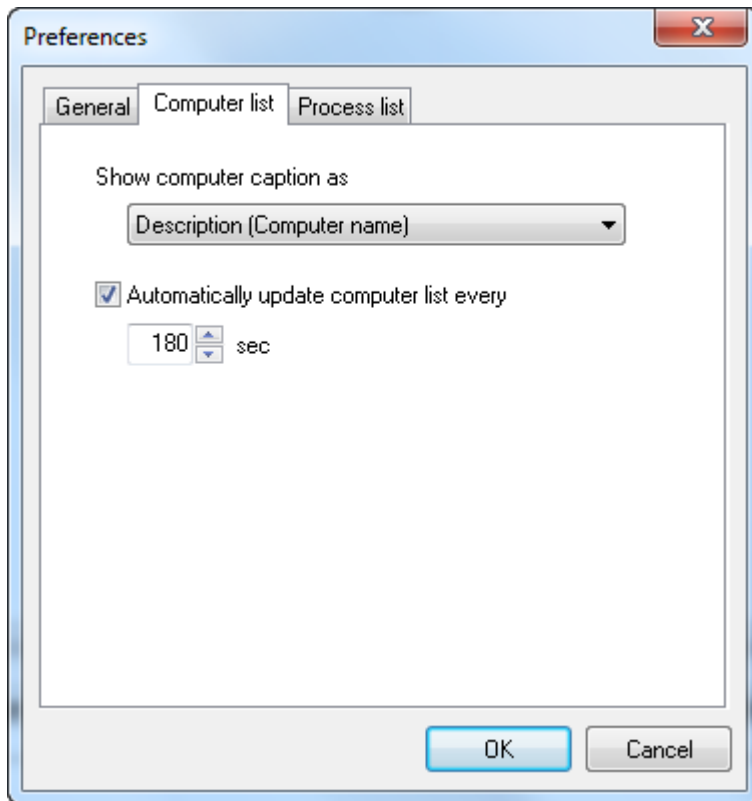


You can use this tab to specify the general program preferences.

At startup don't show Wizard if computer list is empty - Once started, the program checks if there are any computers in the list. If there are no computers in the list, you will be offered to start the Add

Computers Wizard. If you want to disable this feature, select the “**Don’t show Wizard if computer list is empty**” checkbox.

Computer list



You can specify the computer list preferences on this tab.

Show computer caption as

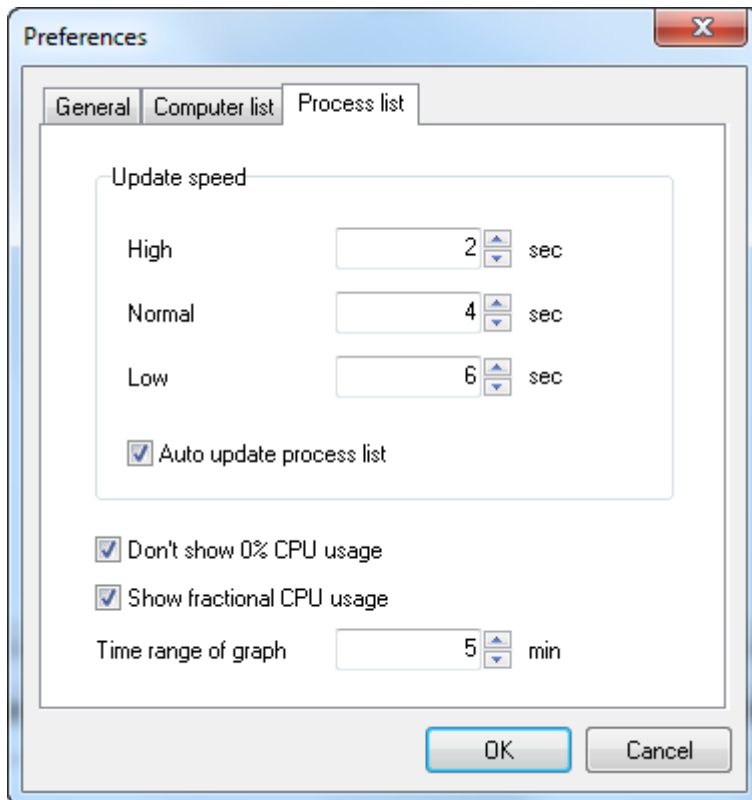
You can select how to display computer names in the list. Available options:

- Description (Computer name)
- Computer name (Description)
- Computer name
- Description

Automatically update list every

If you select this checkbox, the program will update the state of computers (on/off) using the specified time interval. The state of computers is checked with the methods selected in the properties of each computer. If you do not select this checkbox, all computers in the list will be shown as active (on).

Process list



You can specify the process list preferences on this tab.

Update Speed - You can use this section to set update intervals for the process list. The values are specified in seconds and show the interval between attempts to update the process list. If your network bandwidth is low, you should reduce these values.

Auto update process list - If you clear this checkbox, the process list will not be updated automatically. In this case, you will have to update the list manually using the “**Refresh processes**” command.

Don't show 0% CPU usage - CPU usage is not shown for the process with 0% CPU usage

Show fractional CPU usage - CPU usage is shown with fractional part

Time range of graph - Time range of graph could be changed

If you click **OK**, you will apply all the specified preferences.